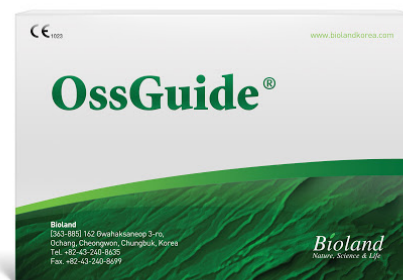


OssGuide™

Absorbable Collagen Membrane For GBR



For Dental Surgery

OssGuide™ is high purified type I collagen membrane derived from porcine tissue for guided bone regeneration. It is used as a curtain for guidance of periodontium in treatment of GBR etc., being used with bone graft material (BGM) or direct adhesion to damaged bone or periodontium.

Advantage of the Product

High Quality

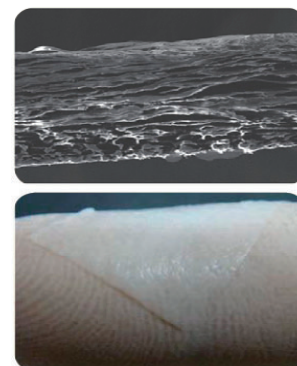
OssGuide™ has excellent tensile strength and is not easily torn. OssGuide™ is absorbed slowly and is maintained in the body for a long period.

Easy Handling

OssGuide™ has excellent flexibility and shows good performance on adhesion and cohesion to the bones. OssGuide™ is excellent for holding a shape.

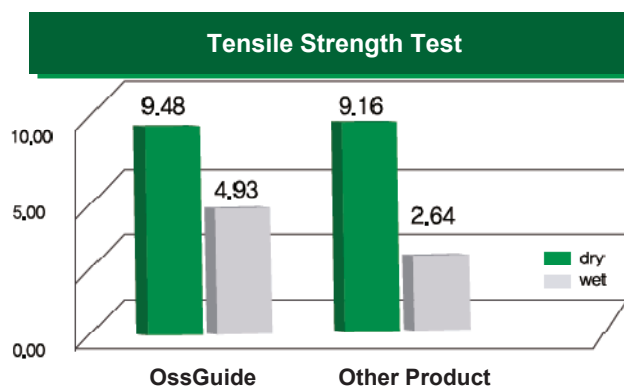
Convenience

OssGuide™ is fast hydrated and not easily torn while in use. OssGuide™ can be used regardless of front and back side.



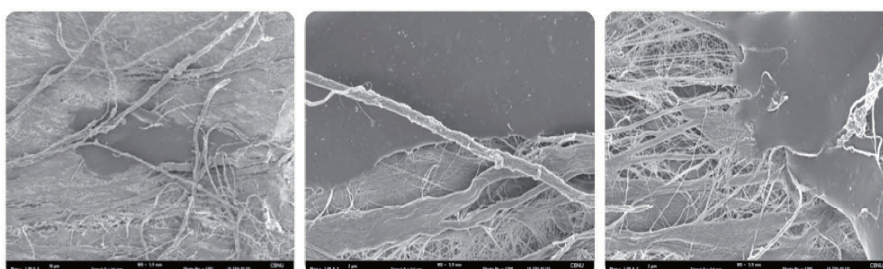
Comparison with other product

Product	Interior Dissolution period
OssGuide	After 3 months
Other product	Within 2 months

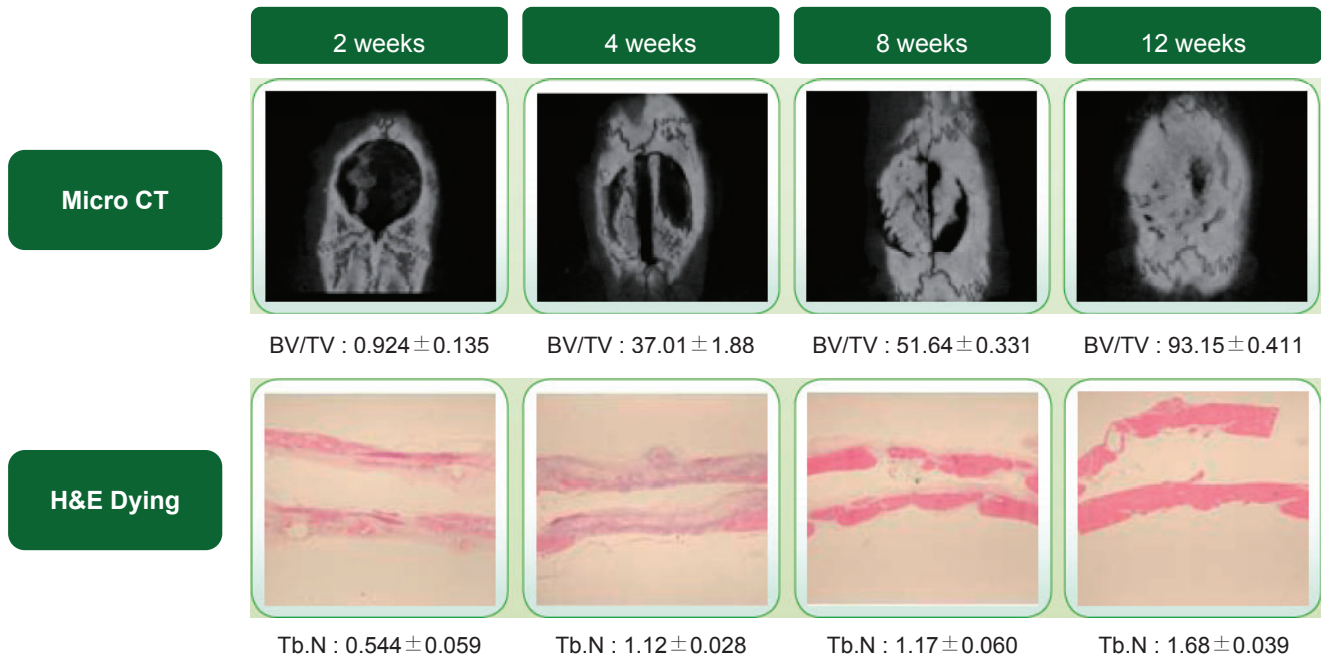


Osteoblast Cell Adhesion Test

After the cultivation by U-2OS osteoblast cell line, it is confirmed by SEM that bone cell is well adhered and replicated on surface of OssGuide™ in day 3.



● Bone Volume, Bone Intensity Test (Rat's Calvarial Bone Defect Model)

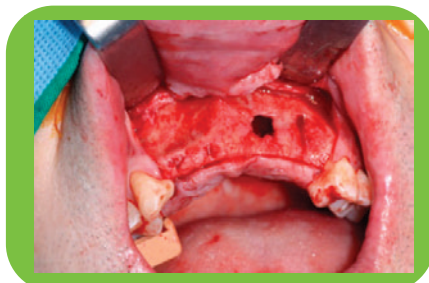


* BV/TV : trabeculae volume / total volume

* Tb.N : number of trabeculae, higher value means stronger bone intensity

► In reviewing the result of micro CT in rat's calvarial bone defect models, after 12 weeks from the operation, a bone volume of OssGuide™ is increased up to 93.15 and bone intensity is up to 1.68. In reviewing the opinion of tissue inspection, after 12 weeks from the operation, OssGuide™ shows perfect bone generation.

● Clinical Application of OssGuide™



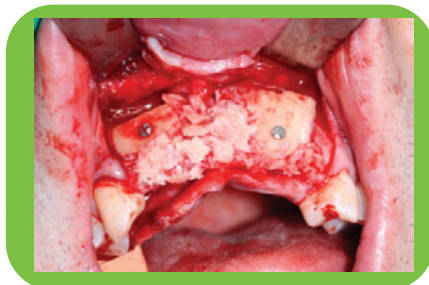
Before Application



Application of OssGuide™



After 4 months



Application of Bone graft



Opened, After 4 months

● Ordering Information

Item Name	Type	Size
OssGuide™	TG-1	15mm x 20mm
	TG-3	30mm x 40mm